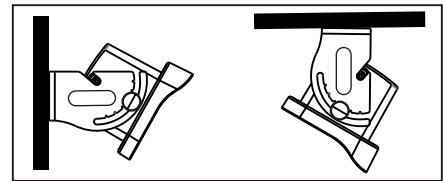
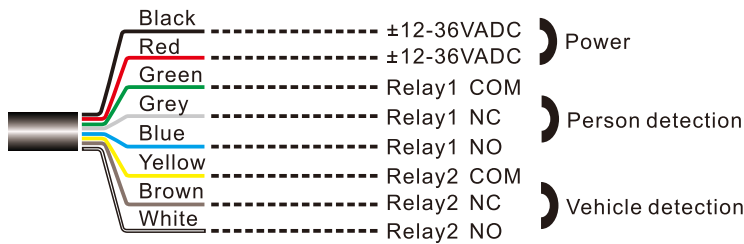


# RVP42-9BW Industrial Door Sensor User Manual

## Products

RP42-9BW is a high-performance motion radar detector for vehicle detection and human detection, specially developed for industrial doors, garage doors, cold storage doors, road gates and other industries. It is with dual relays of vehicle-detection and pedestrian-detection, and can also open the corresponding relay output as needed. Meanwhile, RVP42-9BW has a recognition and filter function for horizontally moving vehicles or pedestrians. Support app setting, you can use remote transmitter and mobile apps to setting the function.

## Wiring And Installation

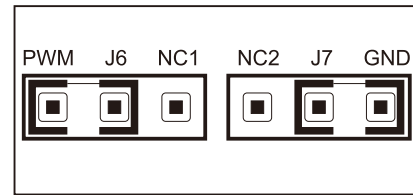
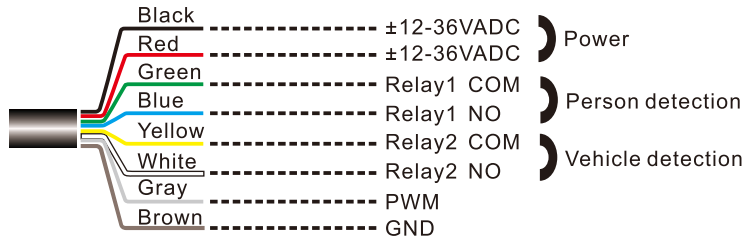


**Notes:** Detect Human (The Red Light is on)  
Detect Vehicle (The Green Light is on)



- The sensor should be firmly installed on a flat surface to eliminate vibration effects.
- Avoid distracting objects (such as banners, plants, etc.) from blocking the detection area.
- Avoid all metal objects covering the sensor front cover.
- Avoid installing the sensor near fluorescent lights.

## Radar Bluetooth Connection Light

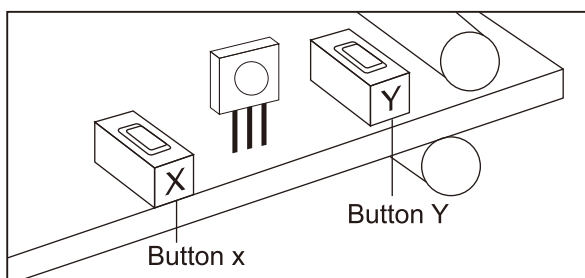


Jumper Cap Setting

**Notes:** Detect Human (The Red Light is on)  
Detect Vehicle (The Green Light is on)

## Setting

- ▶ Operation steps: Press X and Y at the same time to enter the functional settings.
- ▶ Basic functions: Press X and Y buttons at the same time and hold for 2 seconds, The green LED flashes once and then release.
- ▶ Deep function: Press X and Y buttons at the same time and hold for 4 seconds, The red LED flashes once and then release.
- ▶ Restore factory: Press X and Y button at the same time and hold for 8 seconds, Red and green LEDs flash once and then release.



Operation: Press the button X and Y at the same time for the function setting.

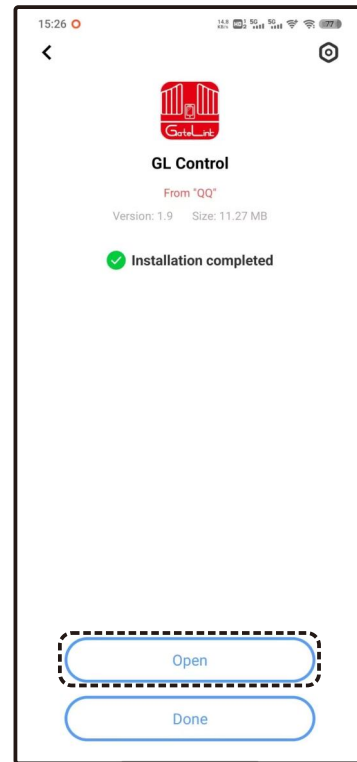
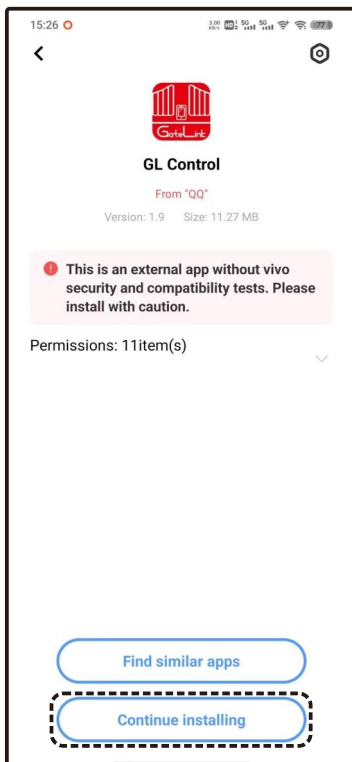
## Technical Data

RVP42-9BW	Application technology:Doppler radar
	Transmission frequency:24.125GHz
	Transmission power:<20dBm
	Detection height:2.0m~9.0m
	Angle adjustment:0°-90°longitudinal
	Detection speed:5cm/s ~ 25km/s
	Detection area(30° Angle): 3.0m*3.5m@height: 2m,6.5m*8.5m@height: 9m
	Operation voltage:12~36VADC
	Operation current:<100mA
	Power frequency:50Hz
	Temperature range:-30 °C ~ + 60 °C
	Relative humidity:0% to 95%, no condensation
	Protection grade:IP65
	Relay output:24VDC@1A 125VAC@0.5A
	External dimensions:164mm x 111mm x 94.5mm
	Cable length:7m
Sensor weight:650g	

# Details of Mobile APP Software Operation

## Scan QR Code To Download (Android)

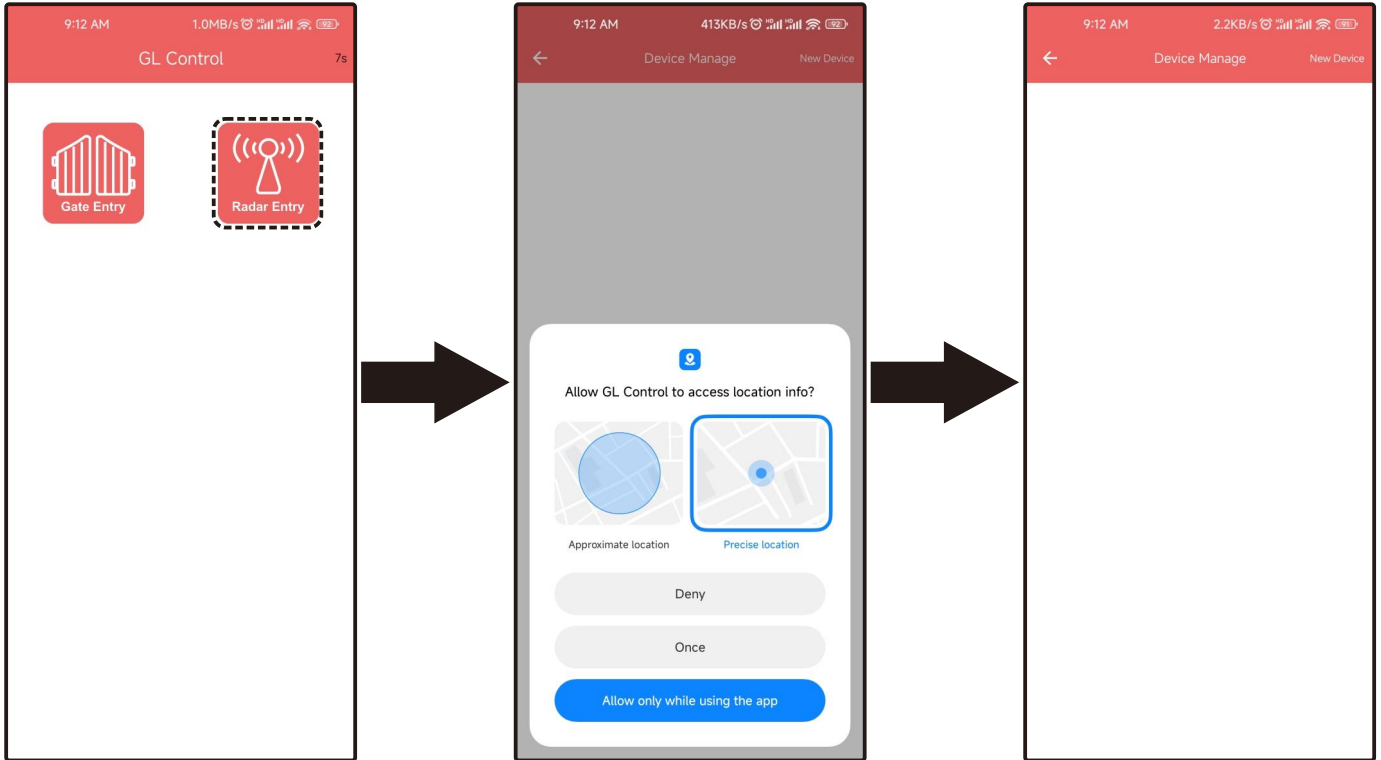
Android users can download and install GL Control by scanning the QR code below, click Install, open Bluetooth, and connect to GL Control



**Note: The initial password is 12345678, and the mobile app is within five meters of the device modification.**

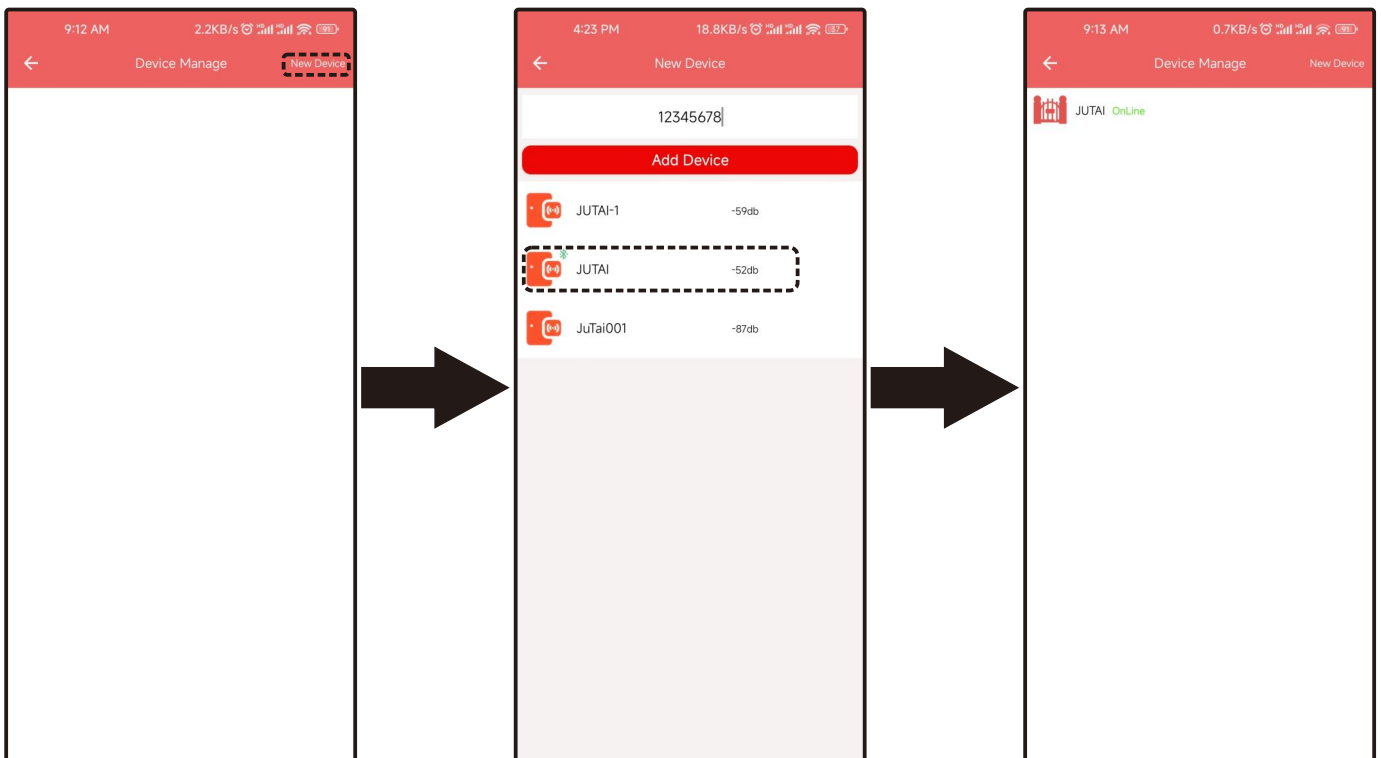
## Software Operation

After installing the APP, open the phone Bluetooth, Enter the APP, click “Radar Entry”, Allow location authorization, As shown below:



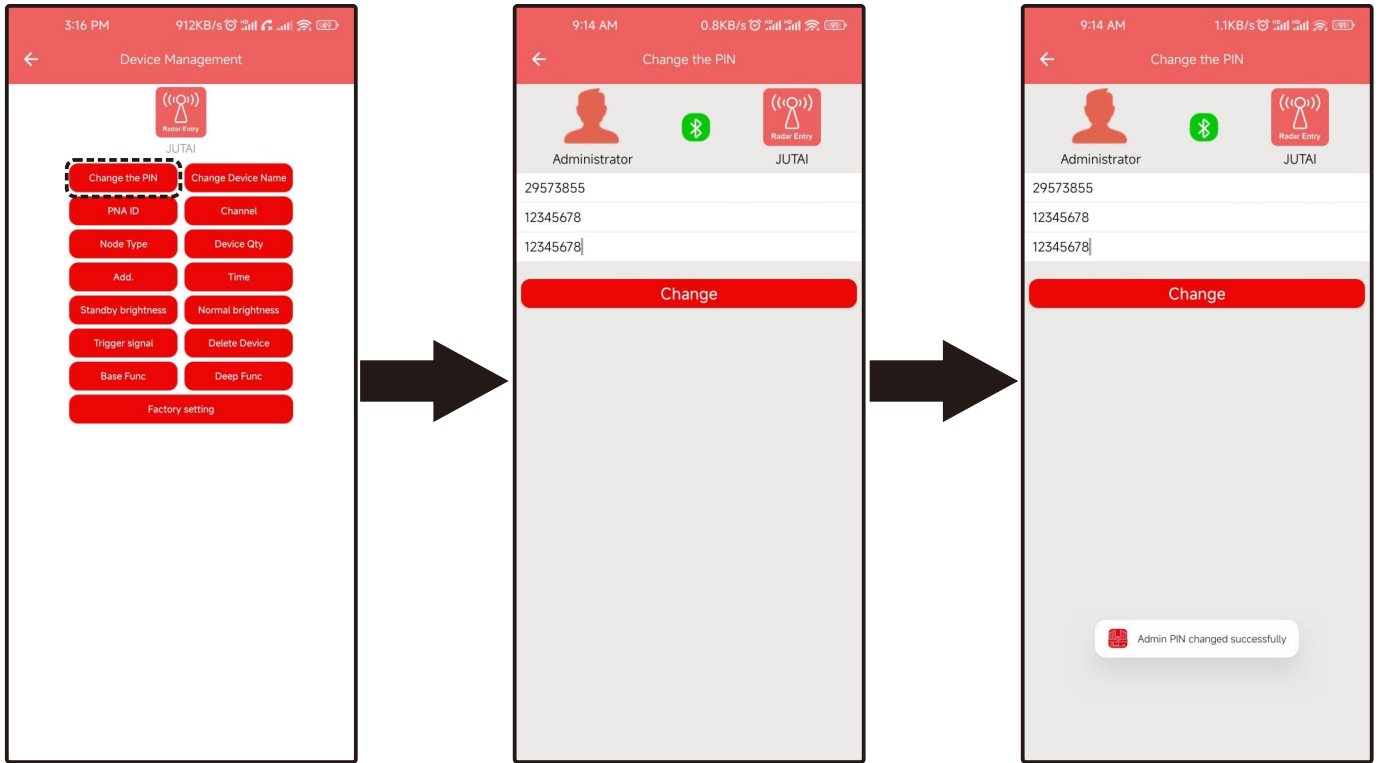
## Adding Devices

Click the “New Device”, and Choose the radar sensor device, input the initial password and click on Add Device.



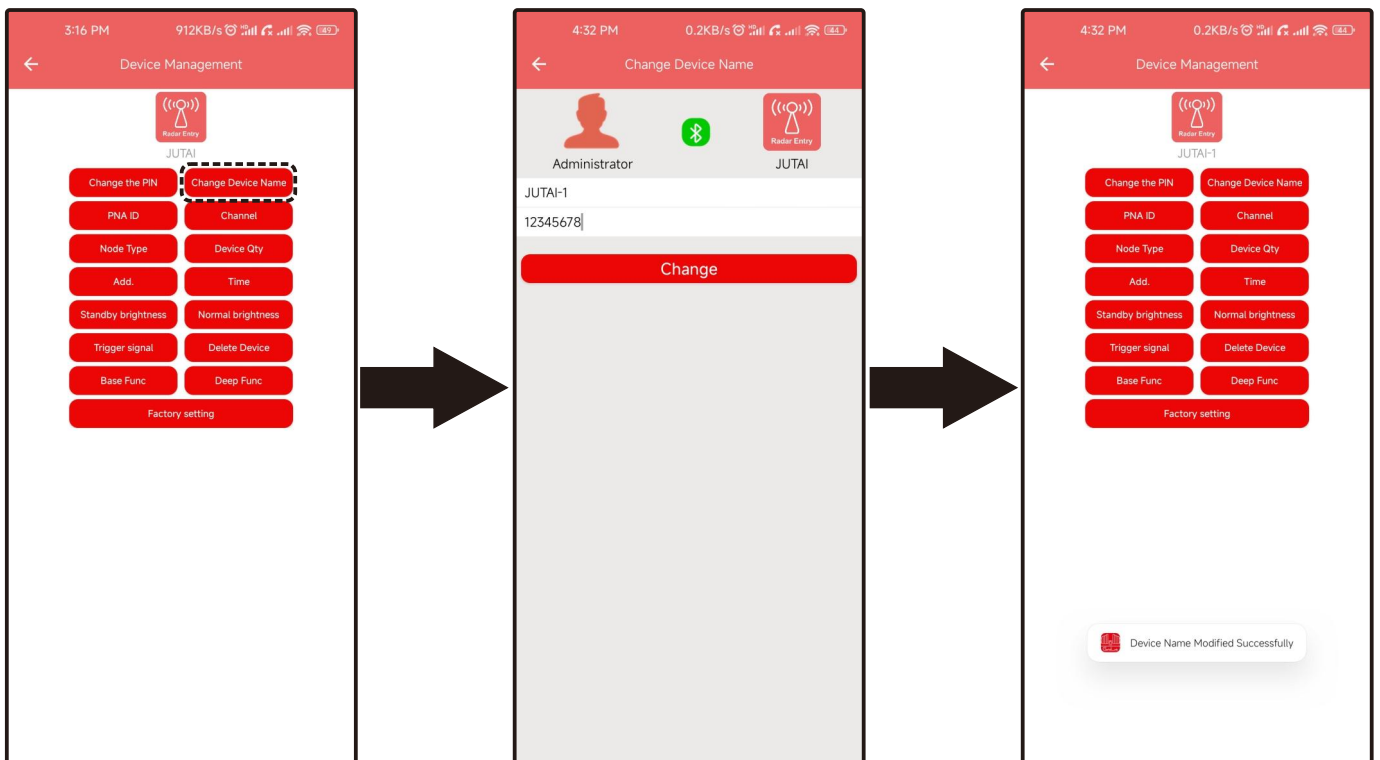
## Change Password

Click “ Change the PIN”, input the initial password, and input the new password, click “Change” to finish.



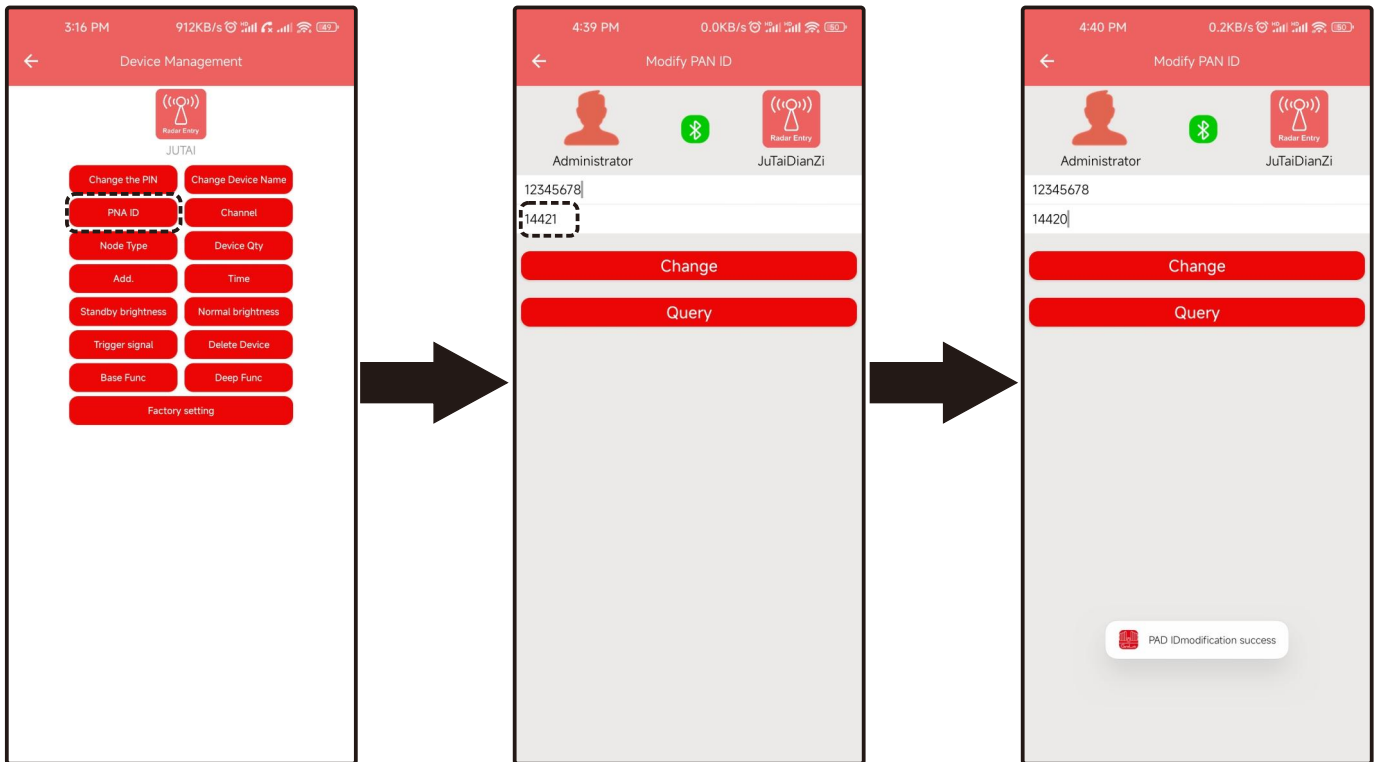
## Change Device Name

Click “ Change Device Name”, input the new name, and password, click “Change” to finish.



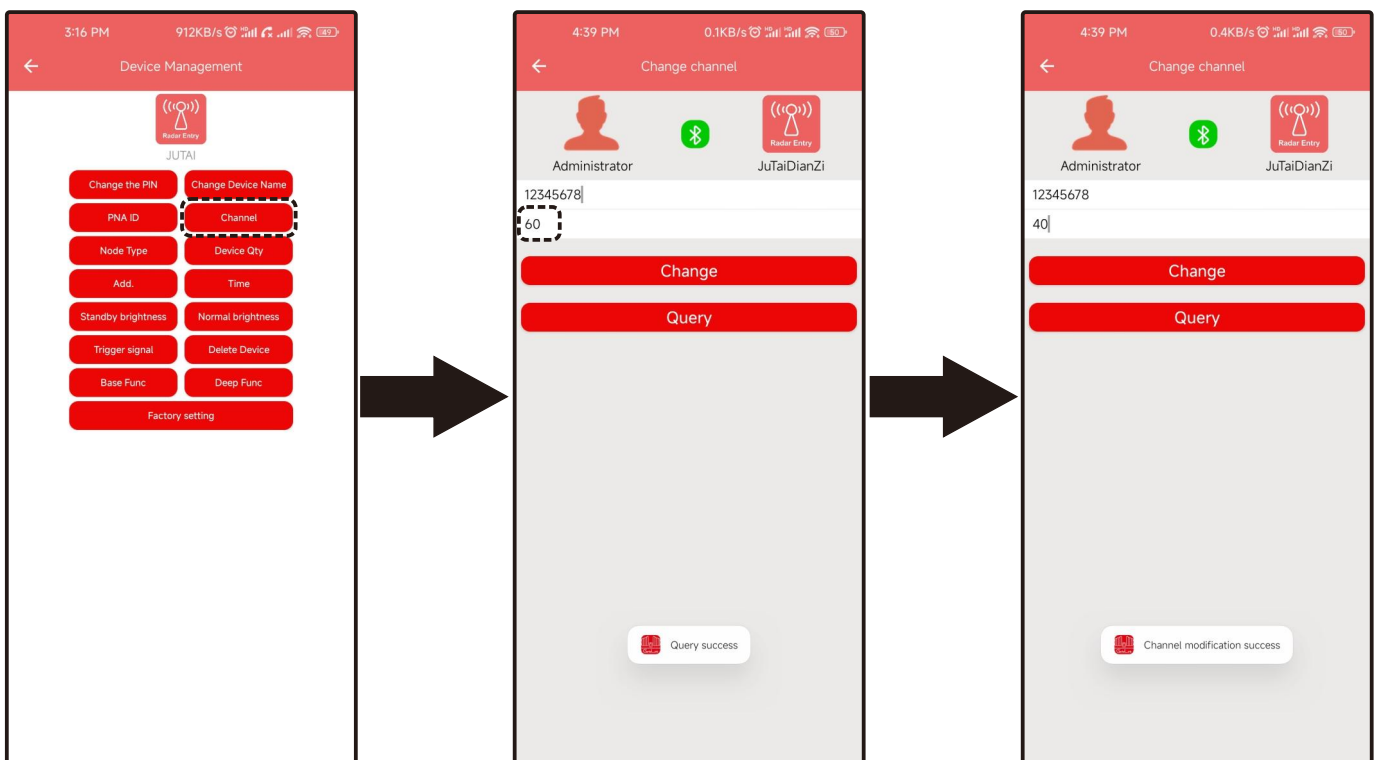
## Change PAN ID

Click " PAN ID", input password, click "Query", it can query this device ID, input new PAD ID(1-65535), click "Change" to finish. Coordinator and End Device need same PAN ID.



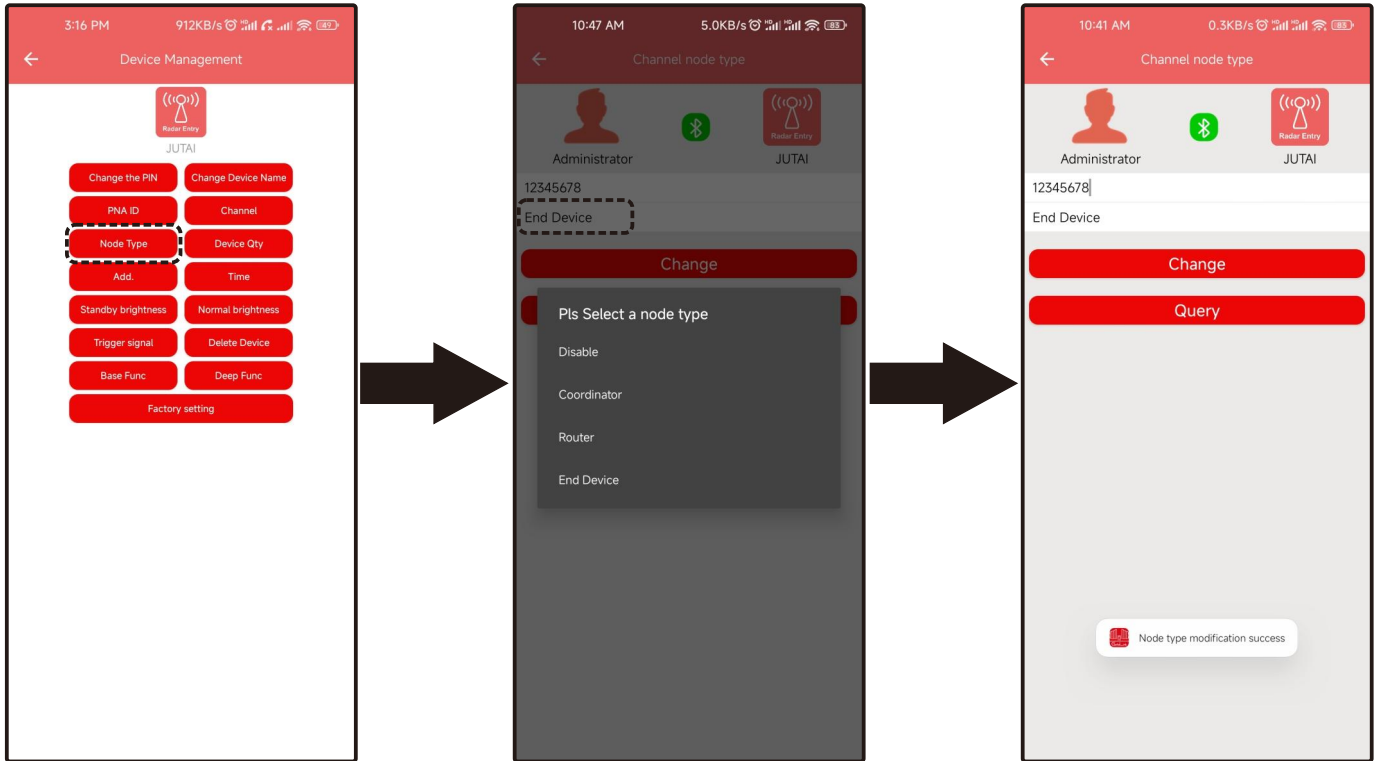
## Change Channel

Click " Channel", input the password, click "Query", it can query this device channel, input channel range (20-60), click "Change" to finish. Coordinator and End Device need same Channel.



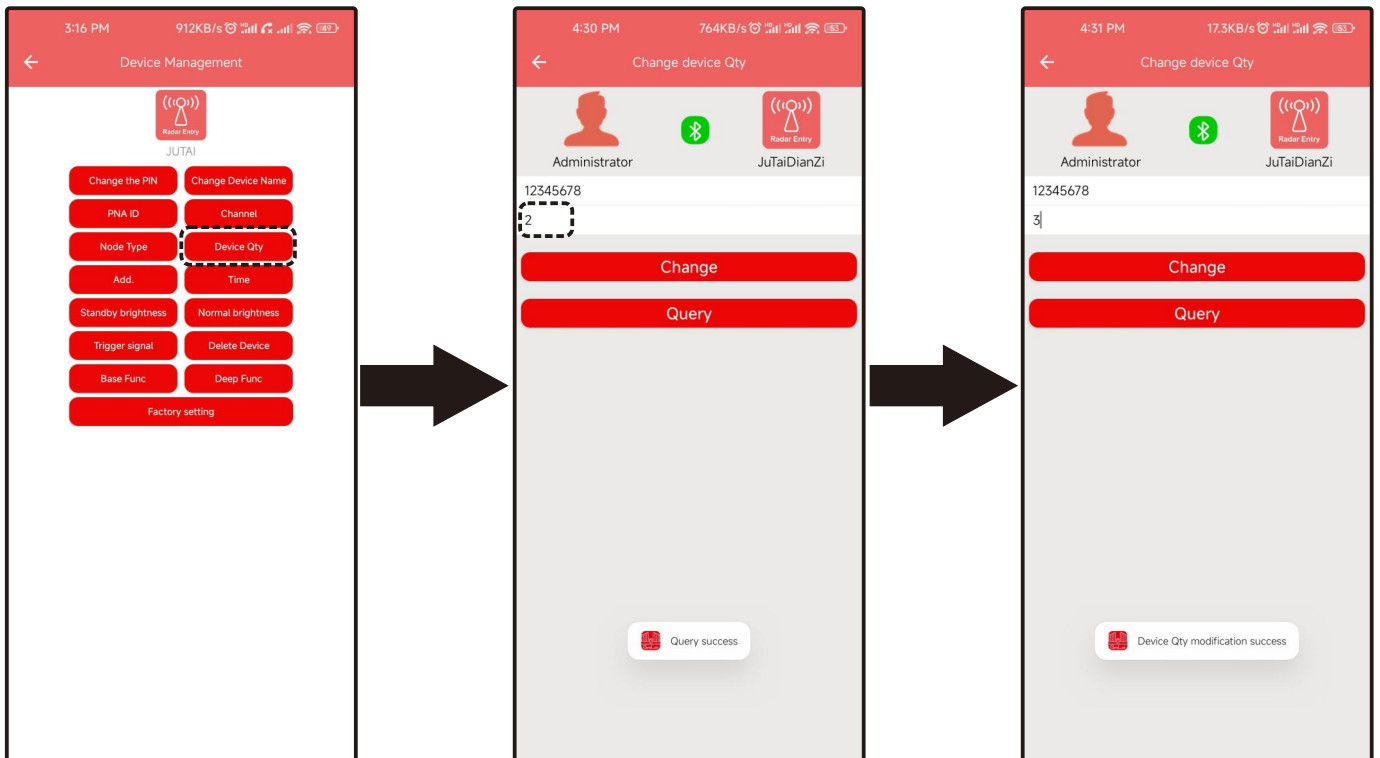
## Change Node Type

Click “ Node Type”, input password, click “Query”, it can query this device Node Type, click it to change coordinator or End Device, If the Coordinator and End device distance are too far, the middle one device need to select Router, click Change to modify.



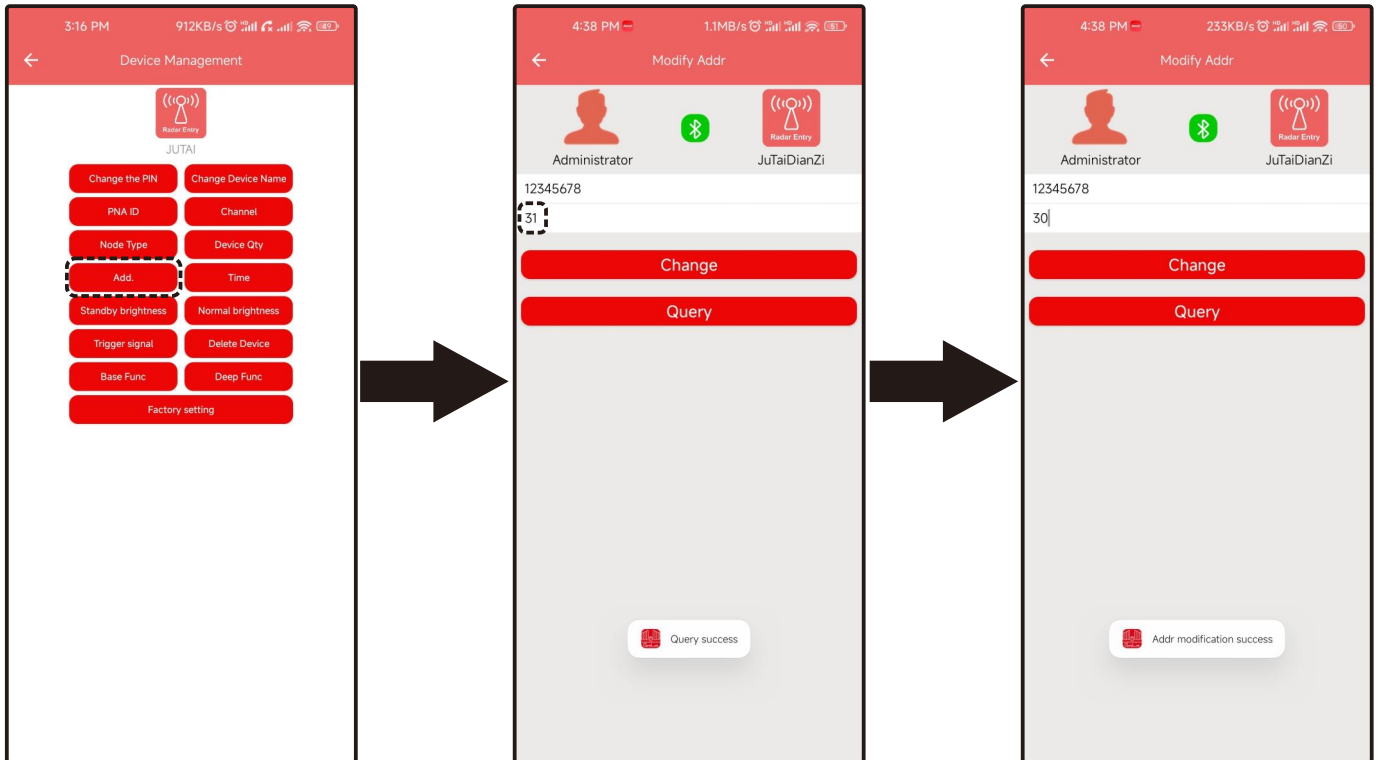
## Change Device Qty

Click “ Device Qty”, input password, input the device Qty(2-31), click “Change” to modify, only change Qty from the Coordinator device. The End Device no need change.



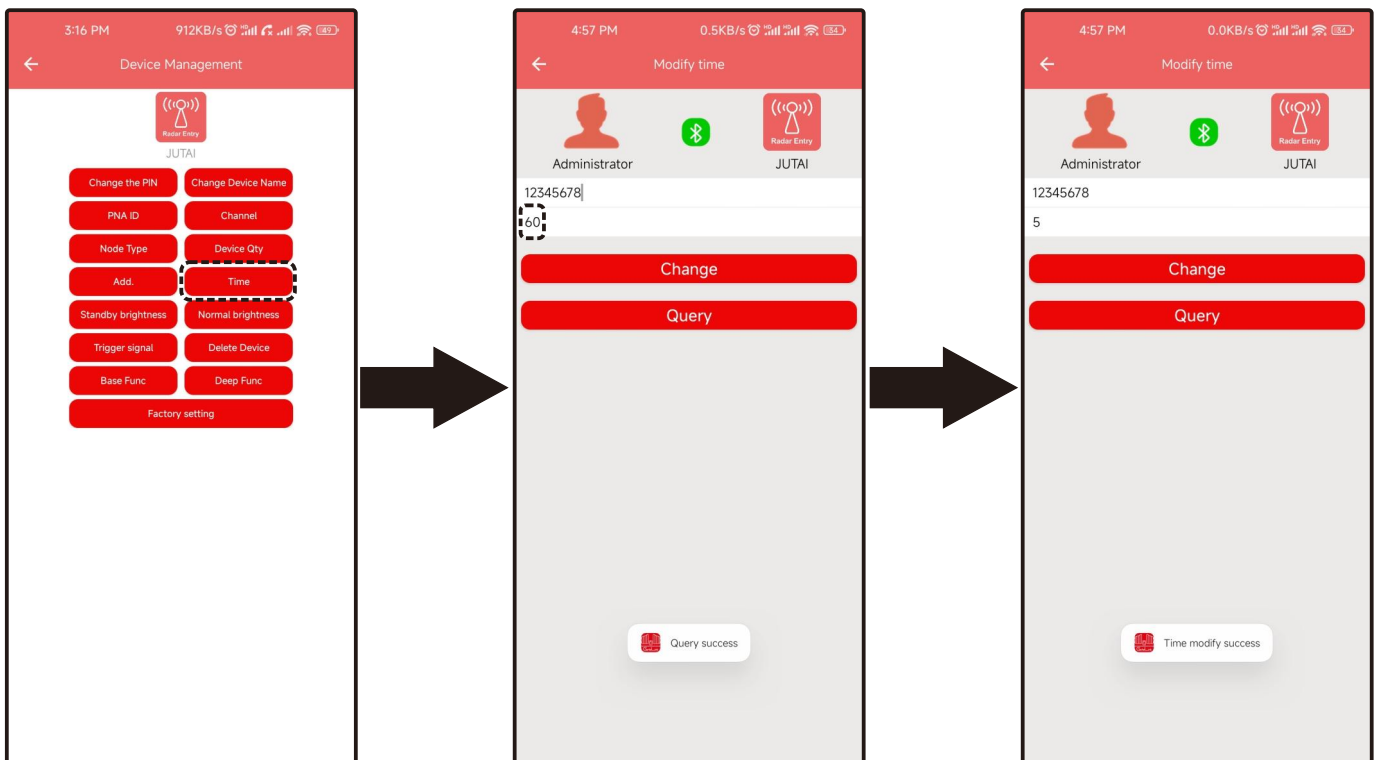
## Change Add

Click "Add", input password, click "Query", it can check the address of this device, click Input New Addr (range: 1-31), The coordinator device has a default address, the End Device can be modified by your choice, click "Change" to modify.



## Change Time (Time of light on)

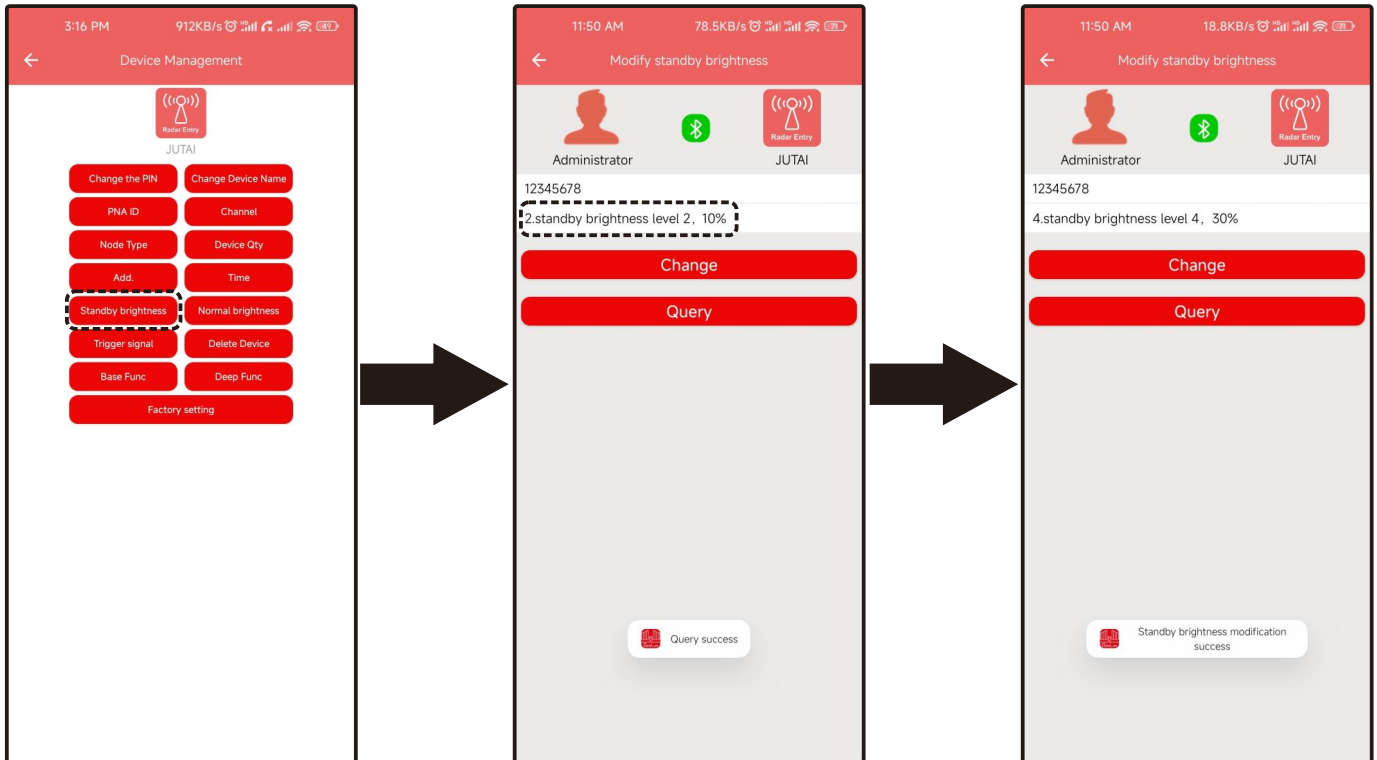
Click "Time", input password, click it to change (2-31), click "Change" to modify.





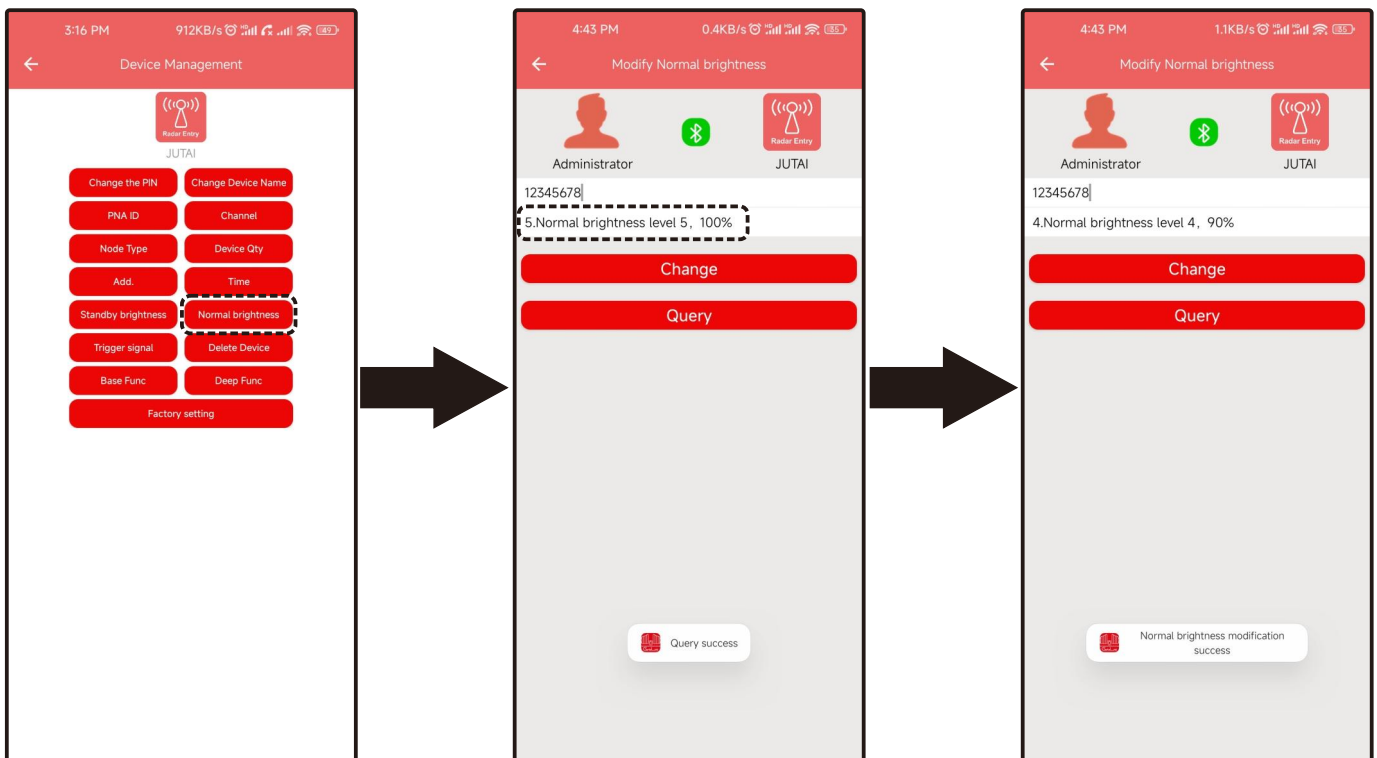
## Change Standby Brightness (Brightness when the light is on standby )

Click “ Standby brightness”, input password, Click “Query”, it can query this device standby brightness, click it to select the brightness you need, Click “Change” to modify.



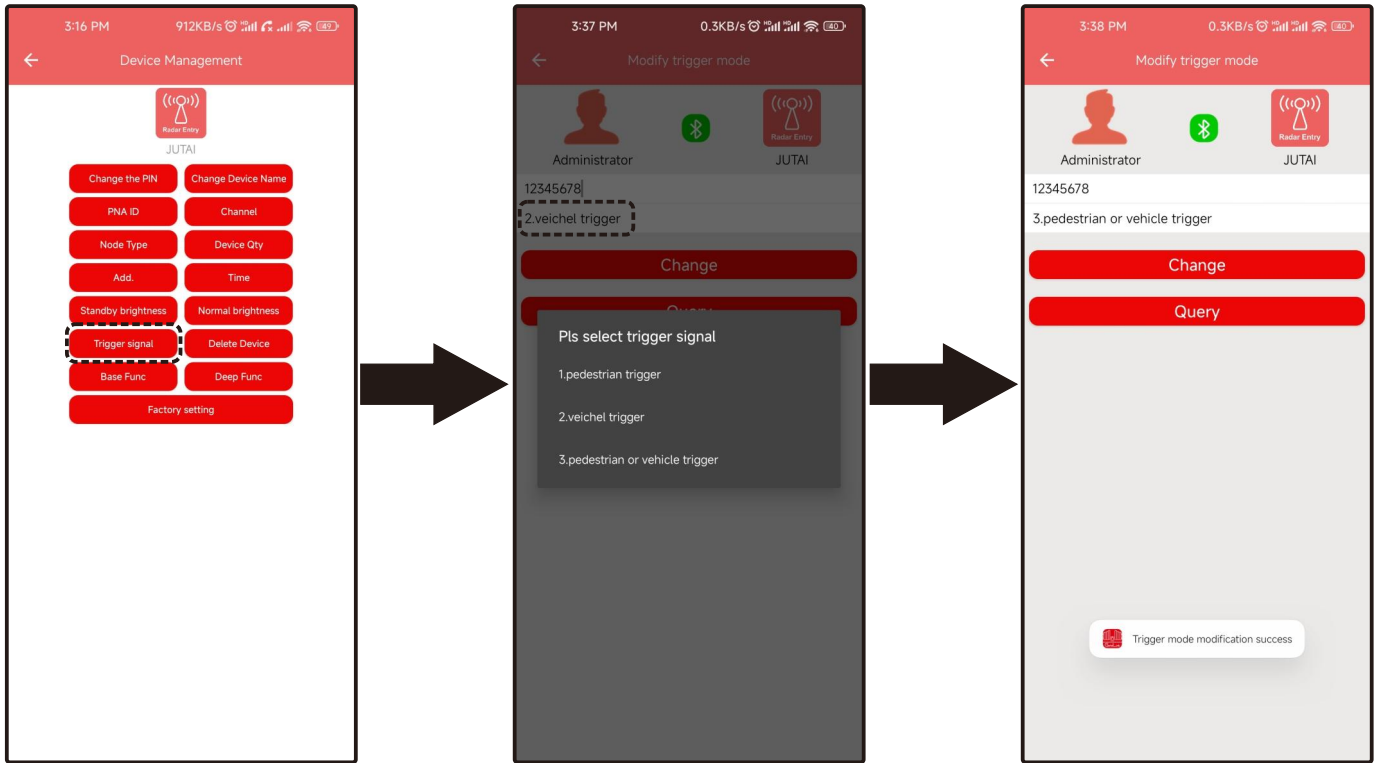
## Change Normal Brightness (The brightness of the light after the radar is triggered)

Click “Normal brightness”, input password, Click “Query”, it can query this device brightness, click it to select the brightness you need, click “Change” to modify.



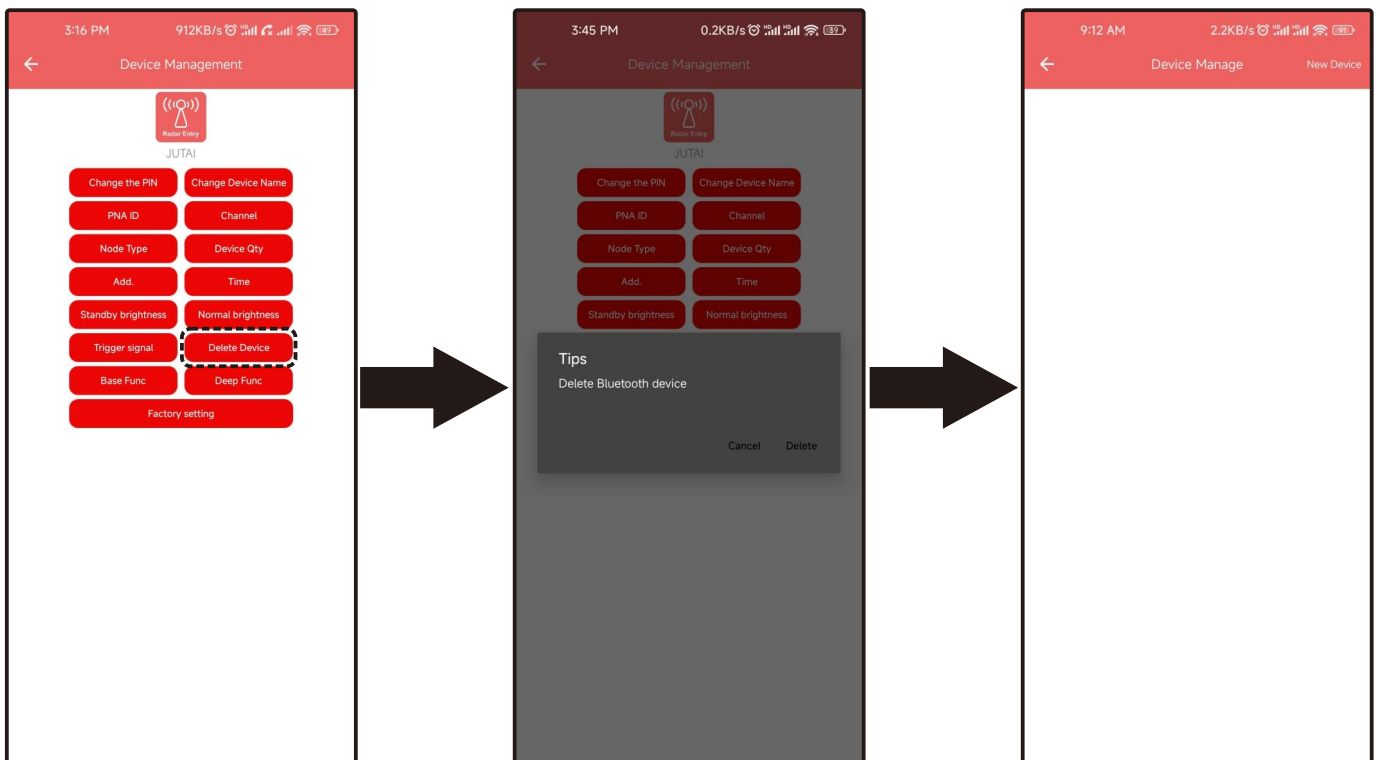
## Change Trigger Signal

Click "Tigger signal", input password, click "Query", it can query this device trigger signal, click it to select the signal you need, click "Change" to modify.



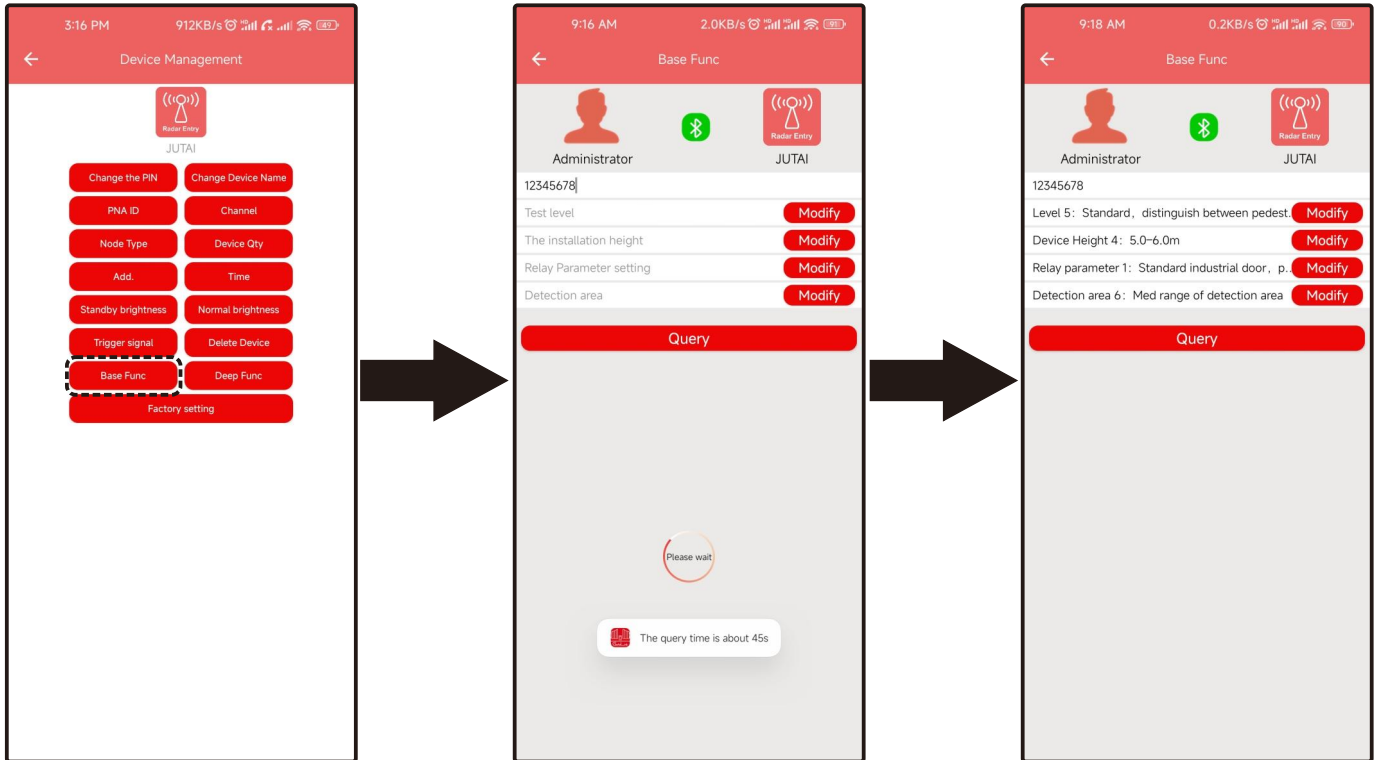
## Delete Device

Click "Delete Device" to delete.



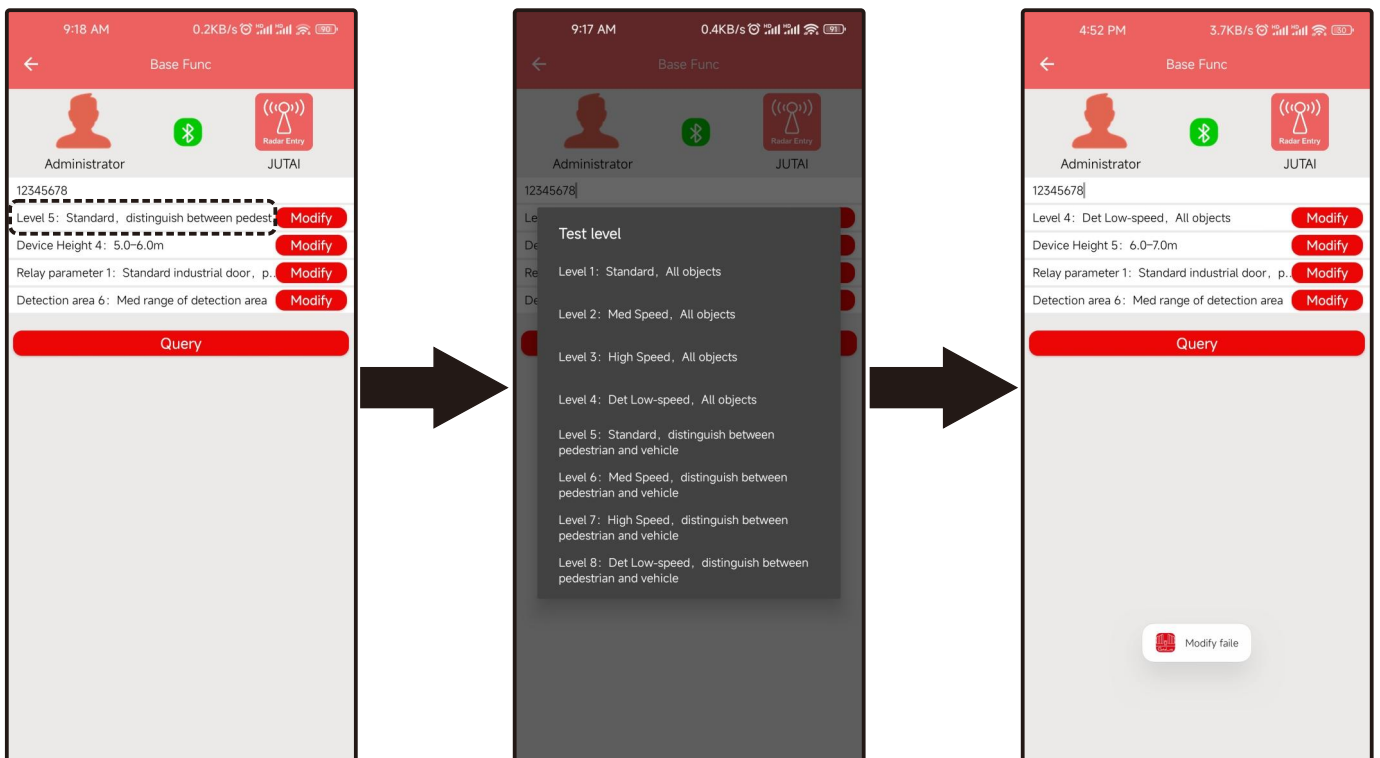
## Base Func ( Radar base function setting)

Click “Base Func”, input password, wait for 45s, it can query this device base function setting.



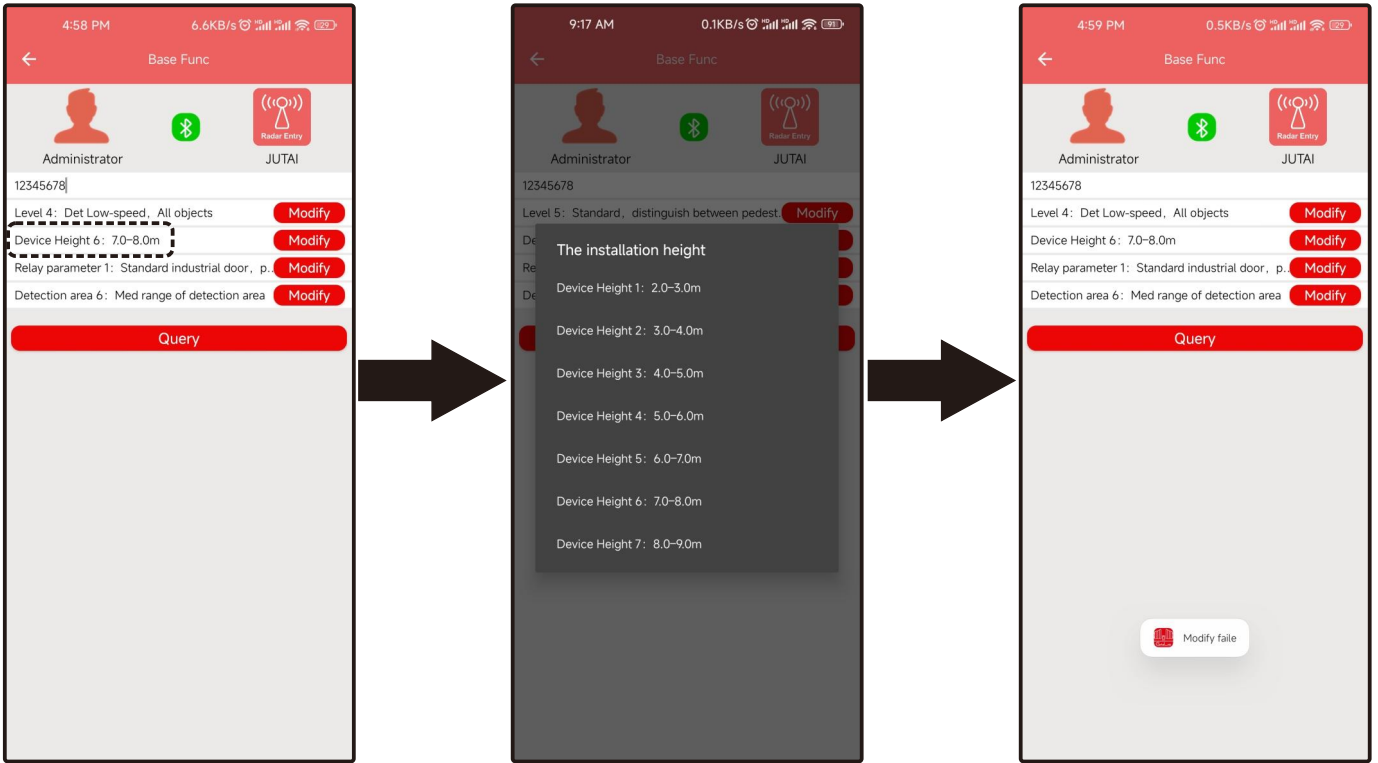
## Test Level Selection

Click “Test Level”, choose the level you need, click “Modify” to save.



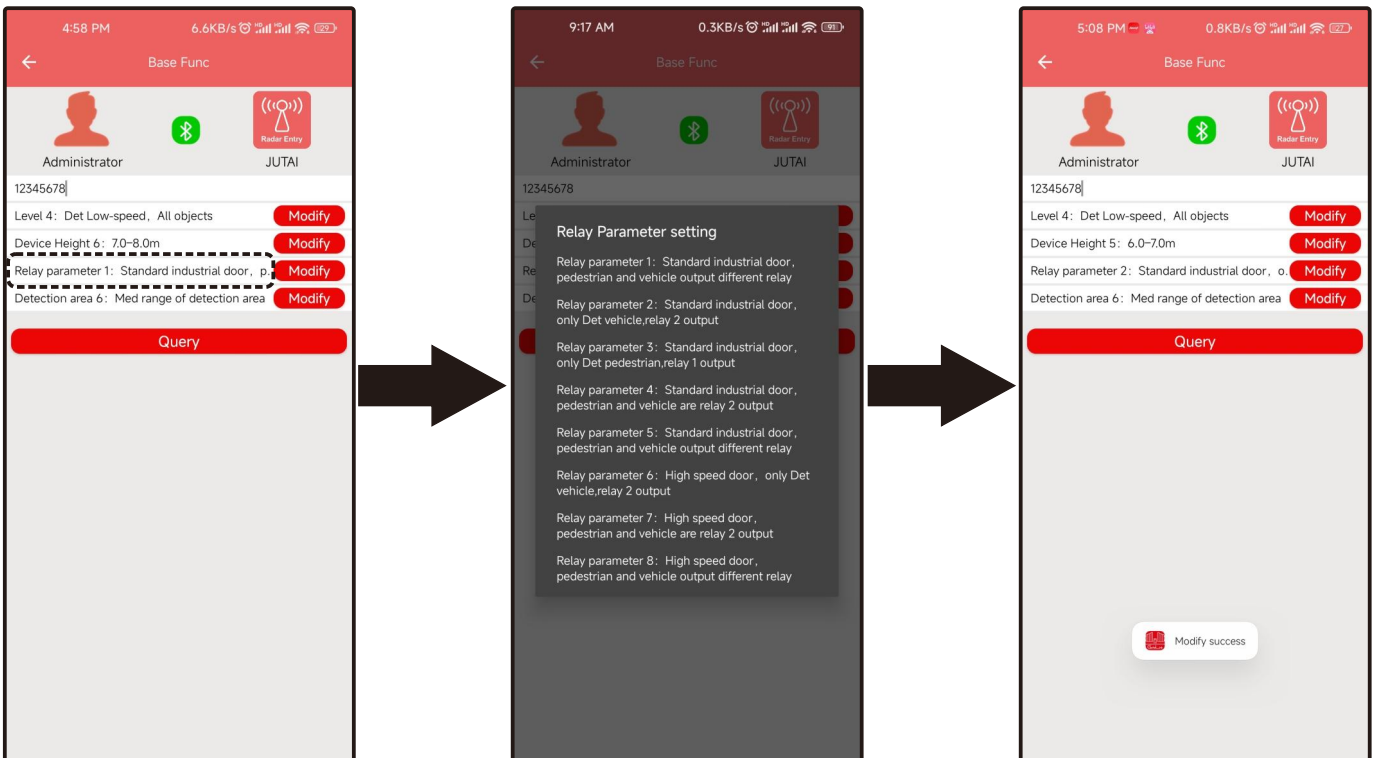
## Installation Height Selection

Click "Installation Height", choose the height you need, click "Modify" to save.



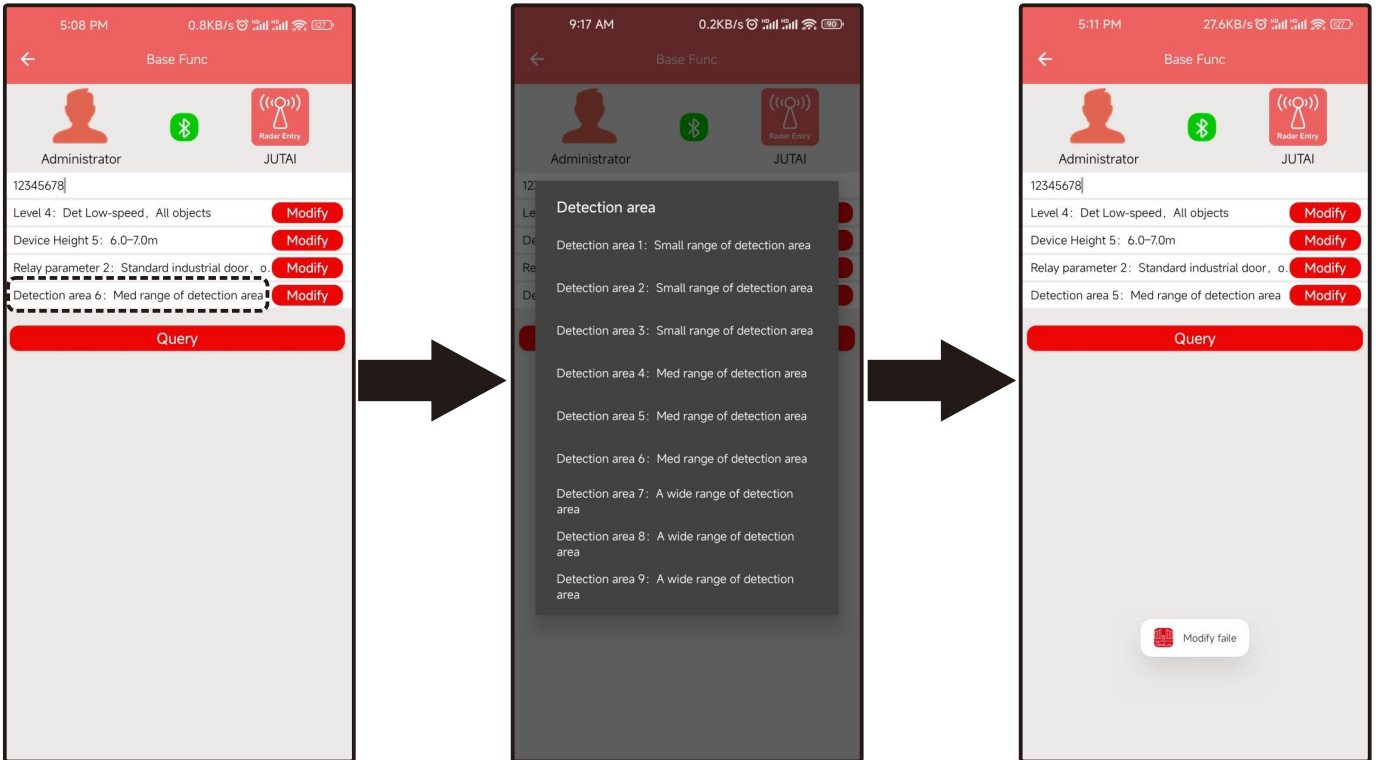
## Relay Parameter Selection

Click "Relay Parameter setting", choose the one you need, click "Modify" to save.



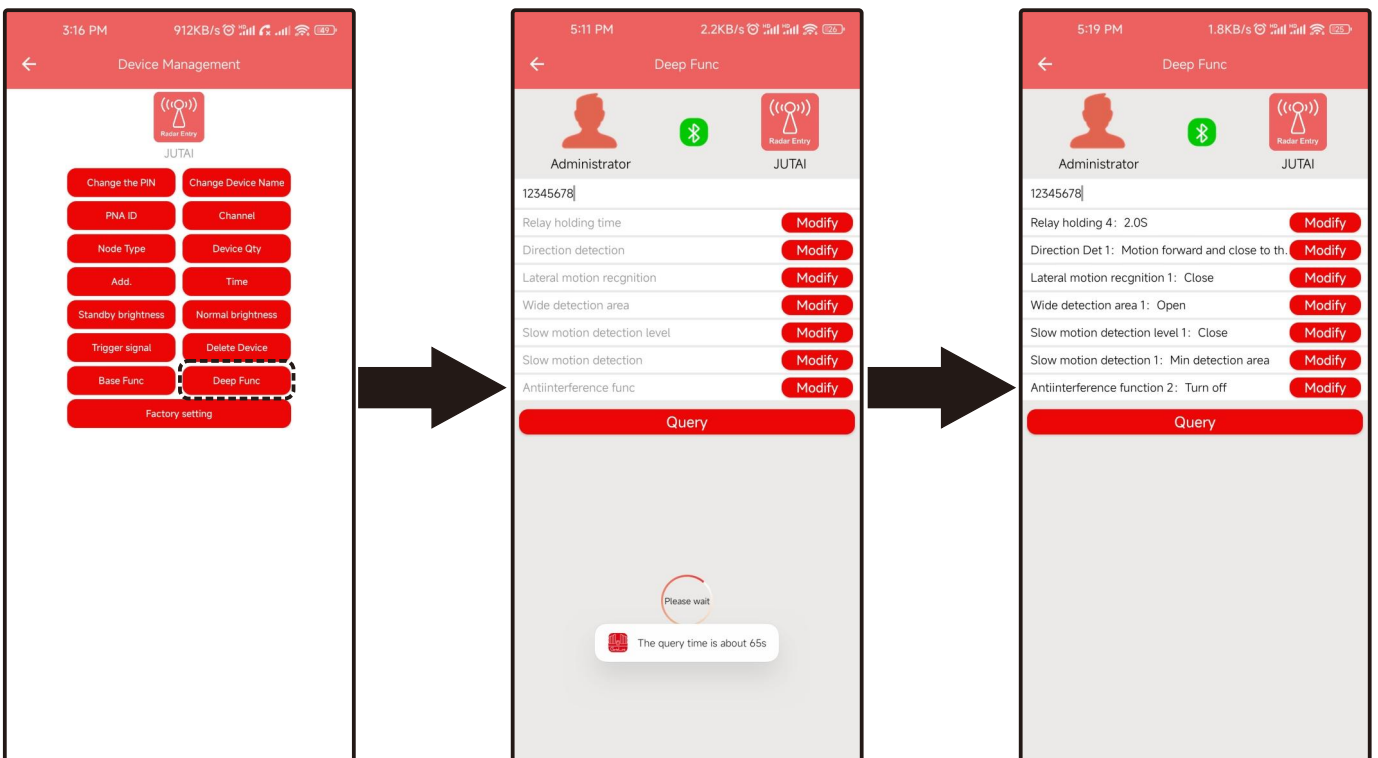
## Detection Area Selection

Click “Detection Area”, choose the area you need, click “Modify” to save.



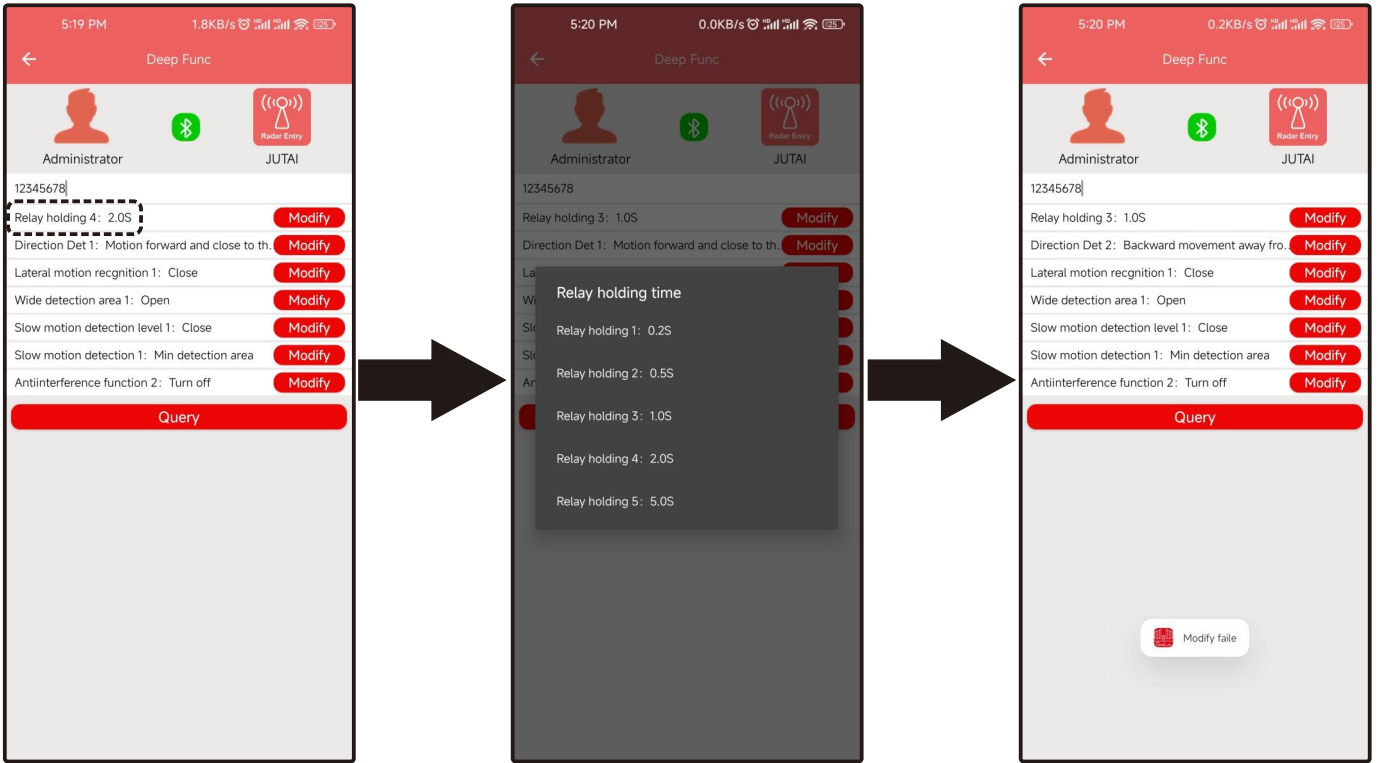
## Deep Func ( Radar deep function setting)

Click “Deep Func”, input password, click “Query”, it can query this device deep function setting status.



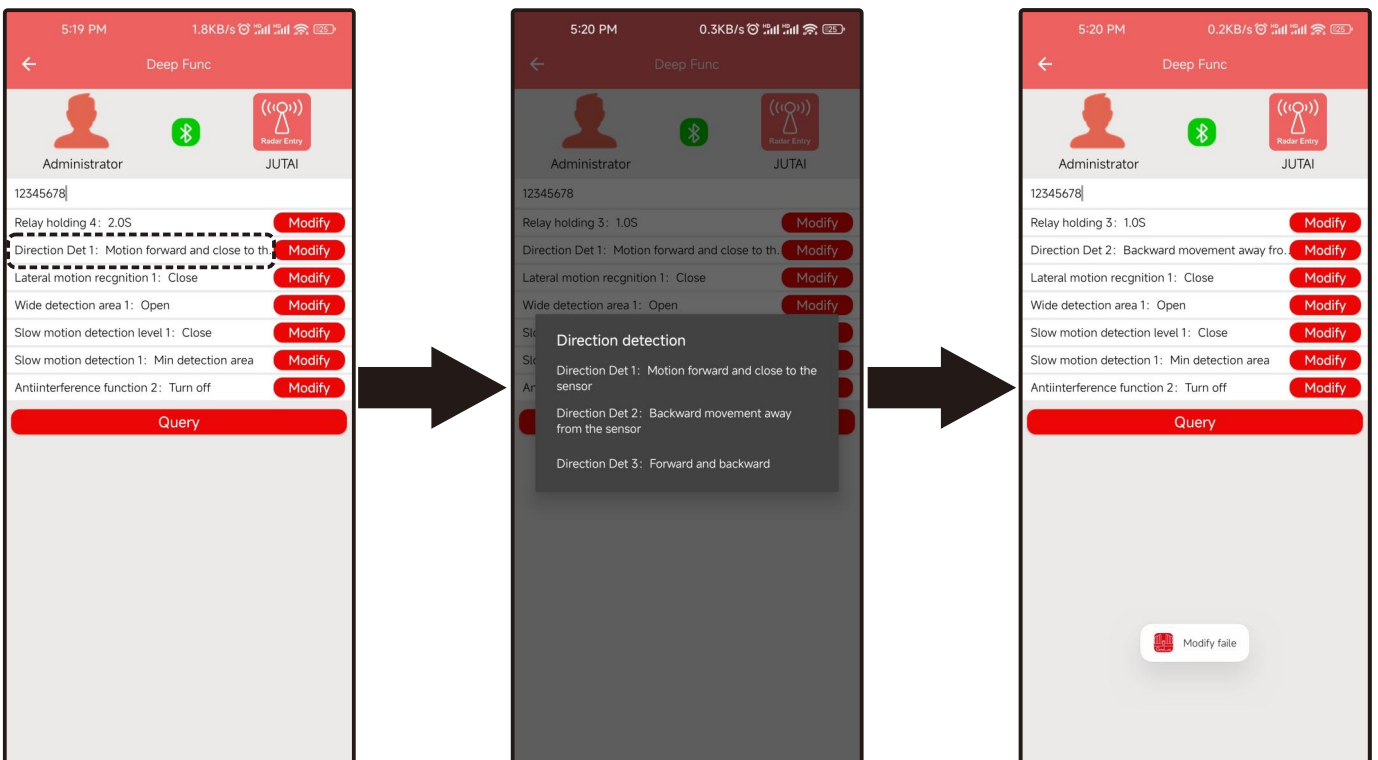
## Relay Holding Time Selection

Input password, click “Relay Holding Time”, choose the time you need, click “Modify” to save.



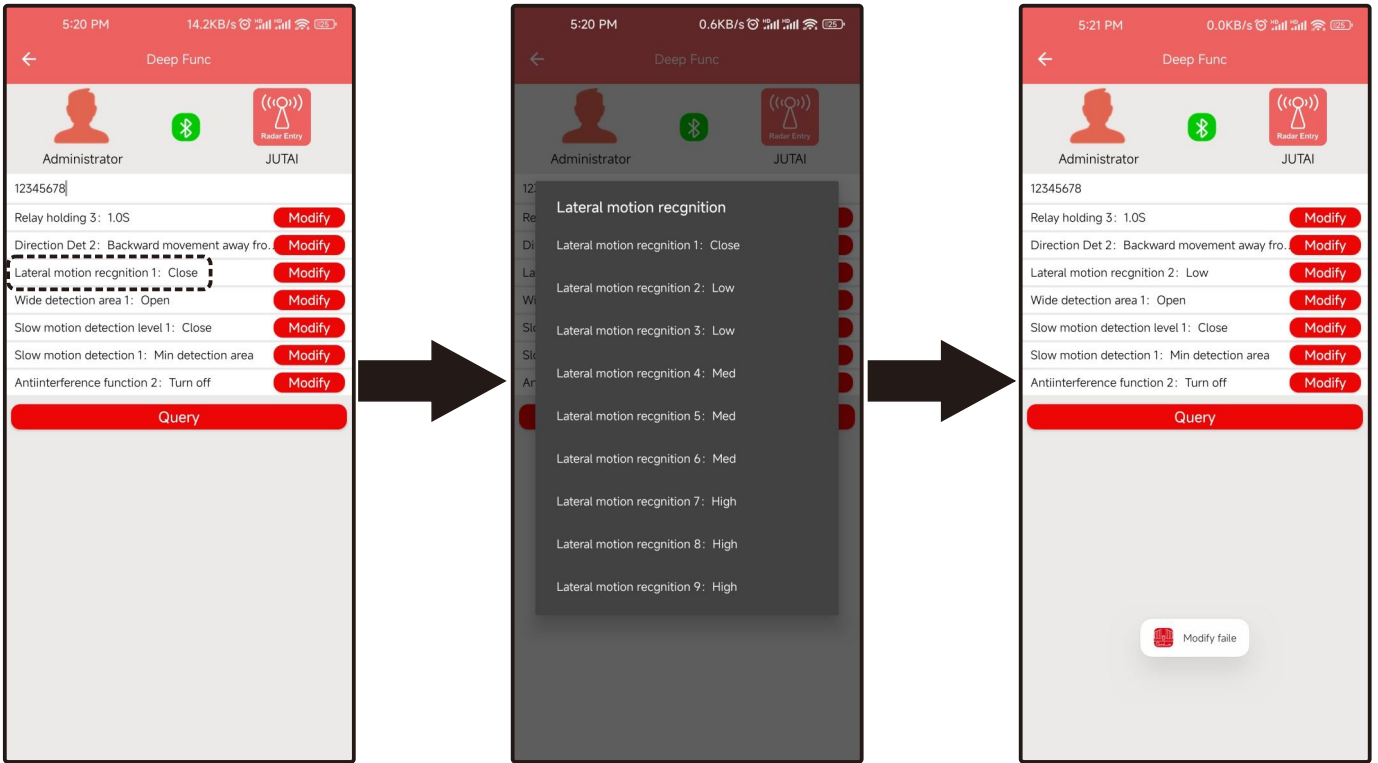
## Direction Detection Selection

Click “Direction Detection” to choose the direction you need, click “Modify” to save.



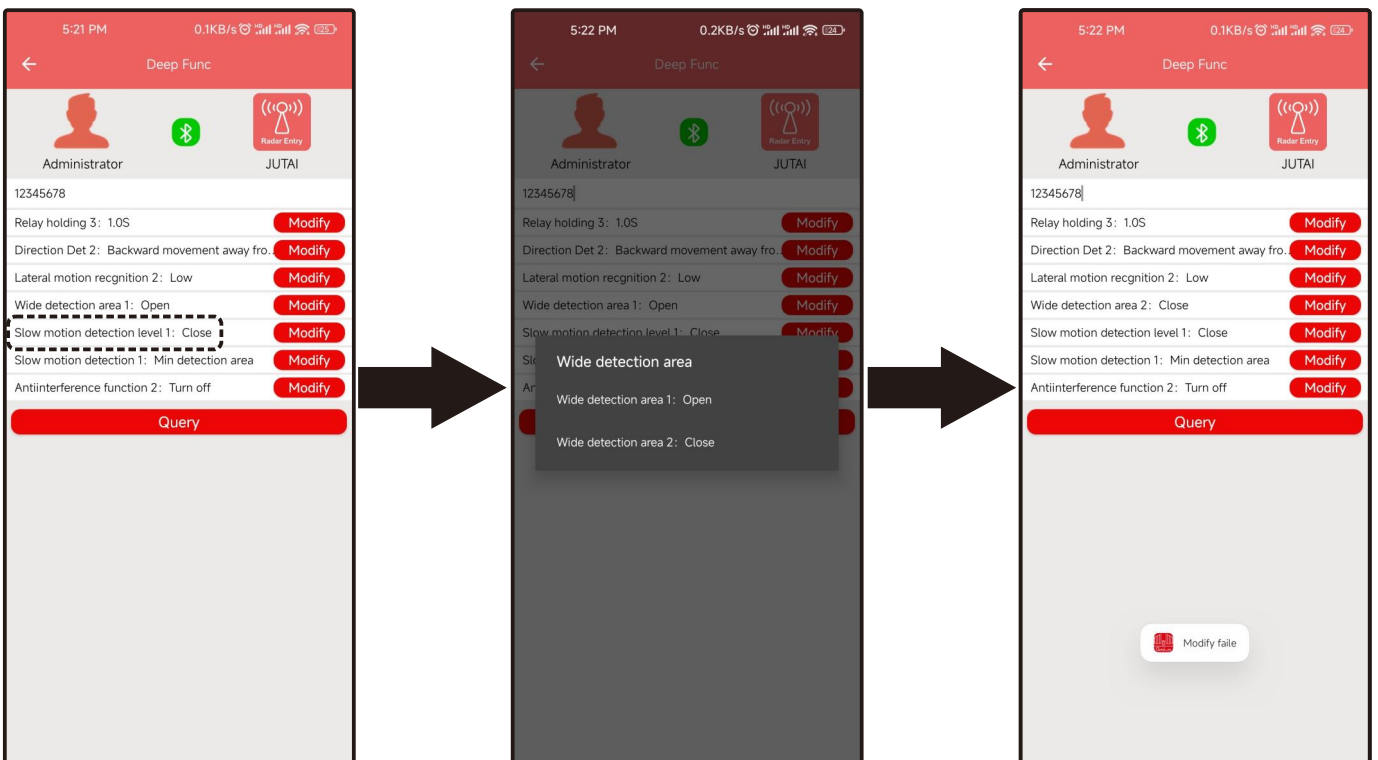
## Lateral Motion Recognition Selection

Click “Lateral motion recognition” to choose the one you need, Click “Modify” to save.



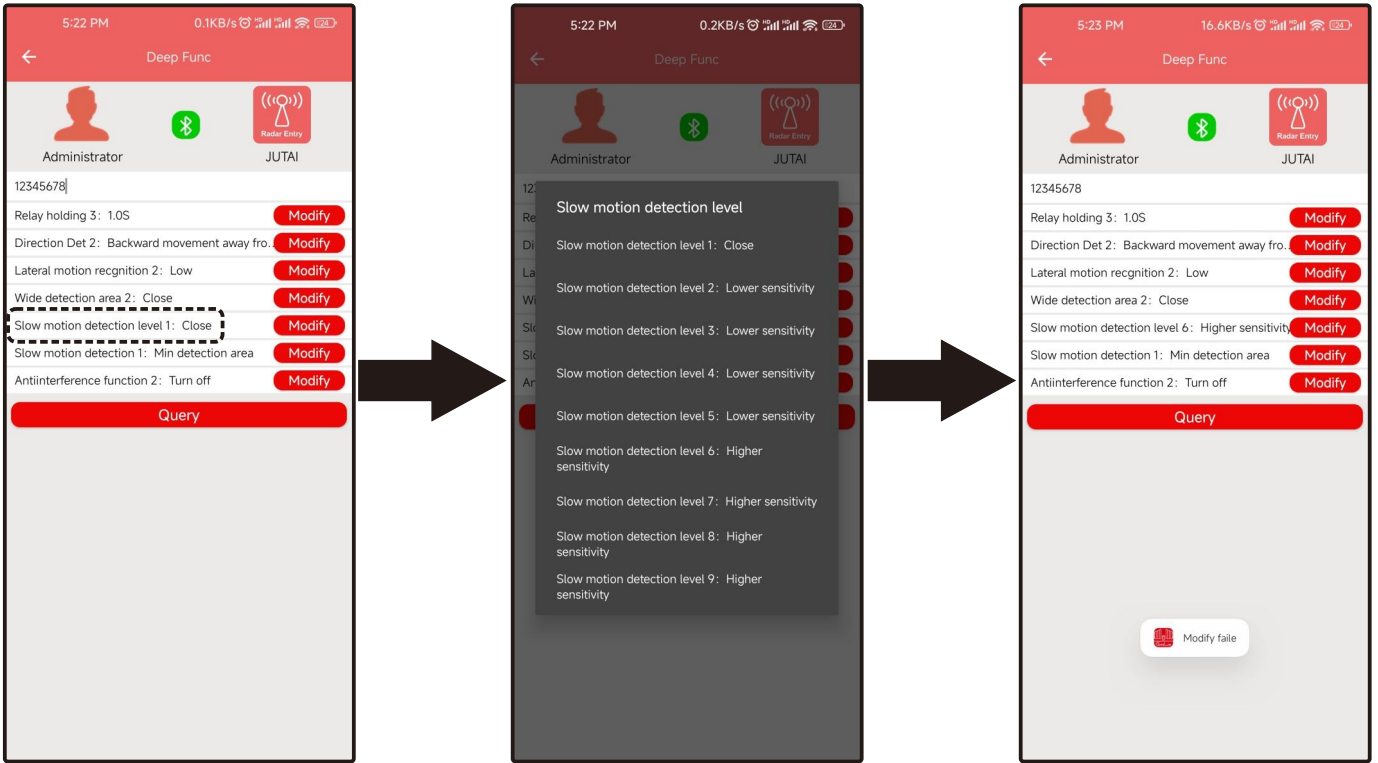
## Wide Detection Area Selection

Click “Wide detection area” to choose open or close, click “Modify” to save.



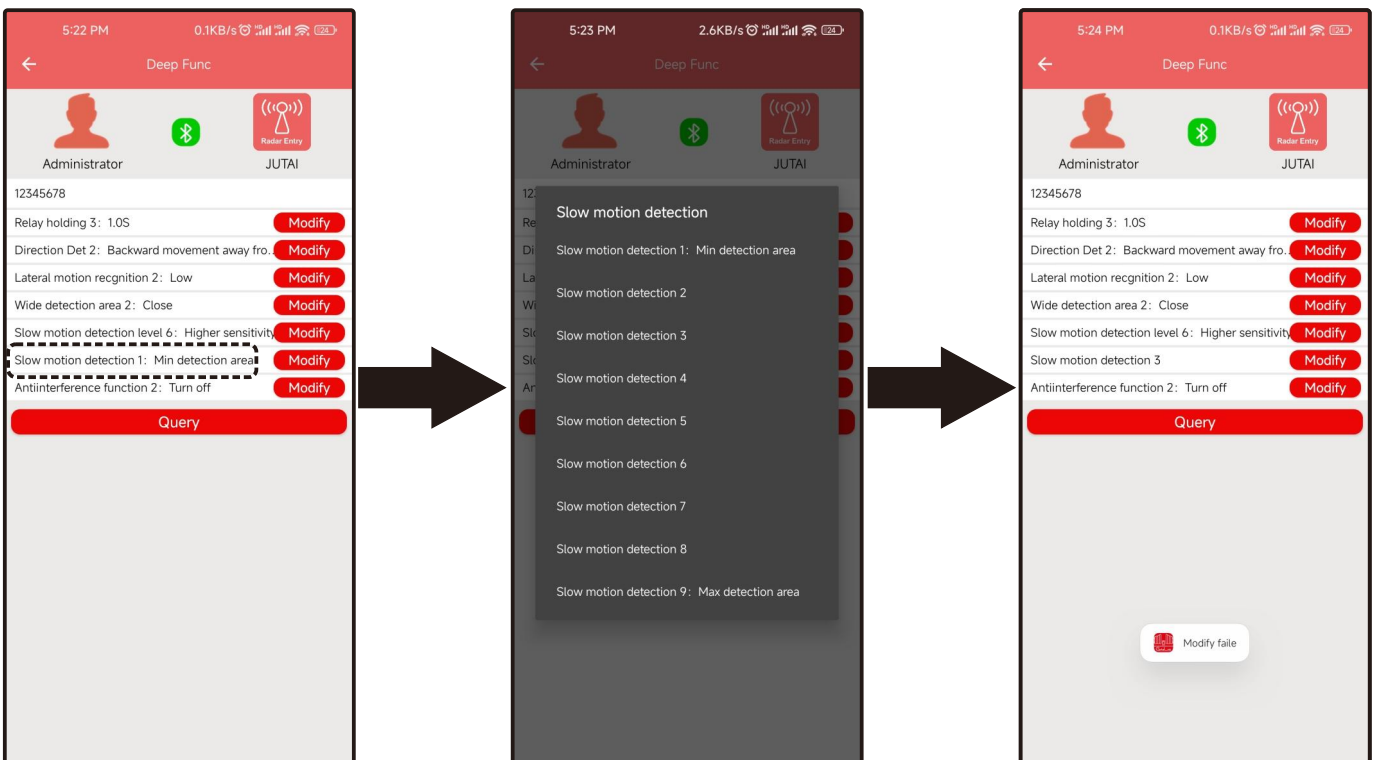
## Slow Motion Detection Level Selection

Click “slow motion detection level” to choose the level you need, click “Modify” to save.



## Slow Motion Detection Selection

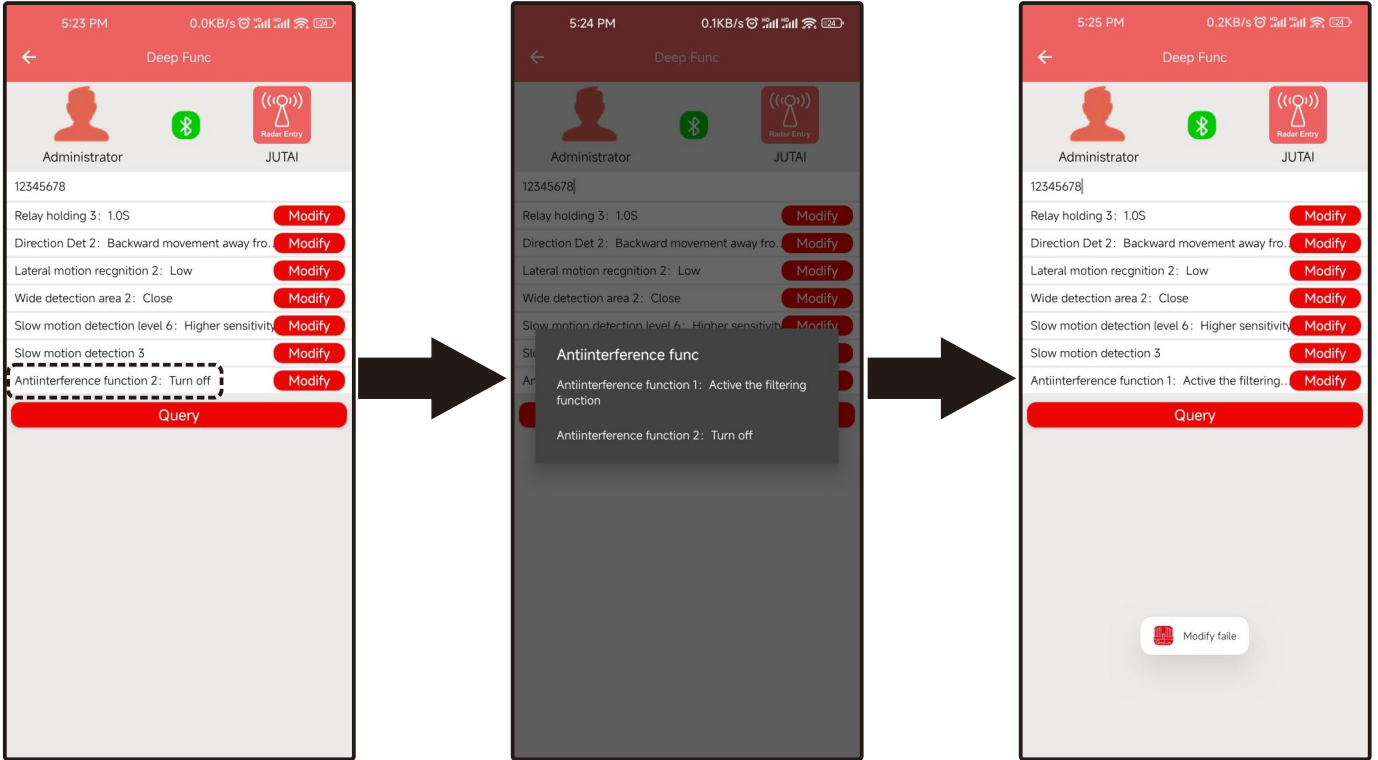
Click “slow motion detection” to choose the one you need, click “Modify” to save.





## Anti-interference Function Selection

Click “Anti-interference func” to choose Active or Turn off, Click “Modify” to save.



## Factory Setting

Input password, click “Enter”, then can restore factory setting.

