

Three Push Button

Rolling Parking Autogate

Model:BG-RM



Function And Advantage

Not less than 2 million mechanical life, not less than 500,000 electrical life.

The Switch contacts are made of copper based silver point, and the whole is silver plated.

The product base is made of flame retardant Nylon.

The casing is fixed with anti-shedding screws.

Products all four sides are designed with the M20 holes, and customers can choose the holes on their own.

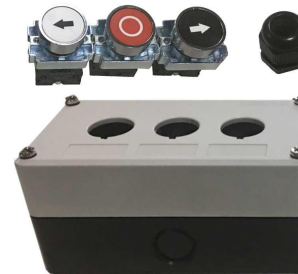
The product is designed with waterproof seal.

Exquisite and easy installation.

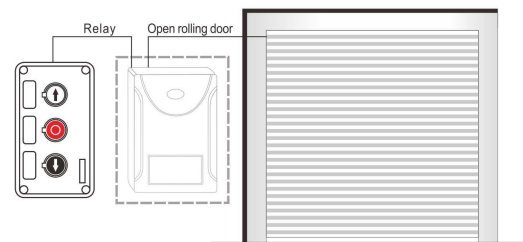
Technology Parameter

Rate insulated voltage	440V
Stipulated hot current	10A
Work frequency	50Hz
Rate working voltage/current	220V@6A, 380V@4A
Rate working voltage/current	24V@3.6A, 220V@0.6A
IP Grade	IP44
Materials	ABS
Color	Gray white
Contacts	1 N/C and 2 N/O

All accessories



Installation Diagram And Application



Size(mm)

